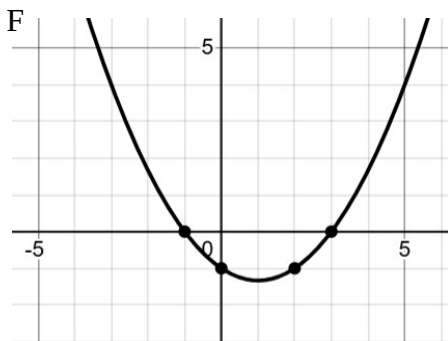
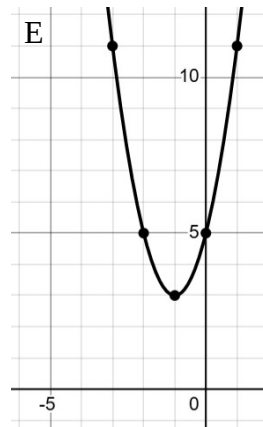
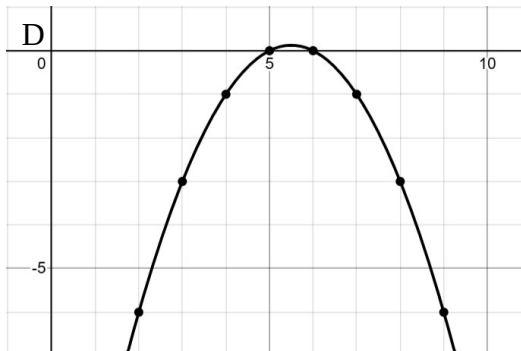
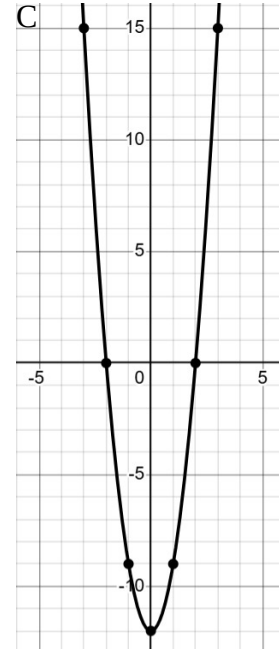
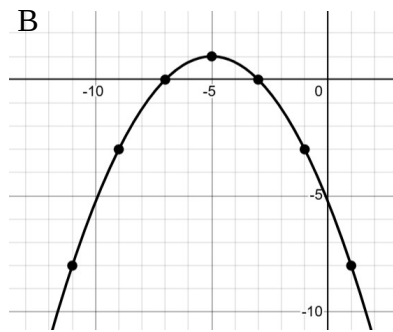
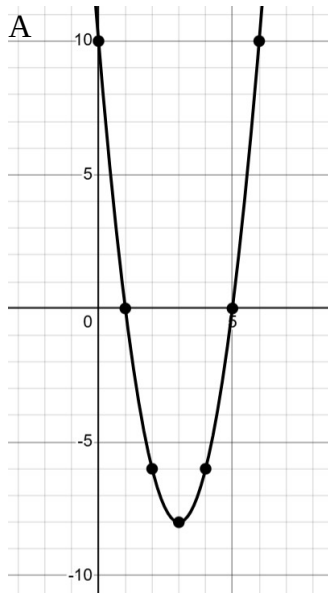


1. Determine an equation for each parabola.



Determine the intersection of each quadratic and line.

a. $y = x^2 + x$ $y = x + 1$

b. $y = x^2 - 3$ $y = x - 1$

c. $y = x^2 + 3x - 5$ $y = 4x + 1$

d. $y = x^2 - x - 2$ $y = x - 3$

e. $y = x^2 + 4x - 5$ $y = x - 7$

f. $y = x^2$ $y = 2x + 3$

g. $x^2 + y^2 = 25$ $y = 5 - x$

h. $x^2 + y^2 = 25$ $y = 3x - 5$