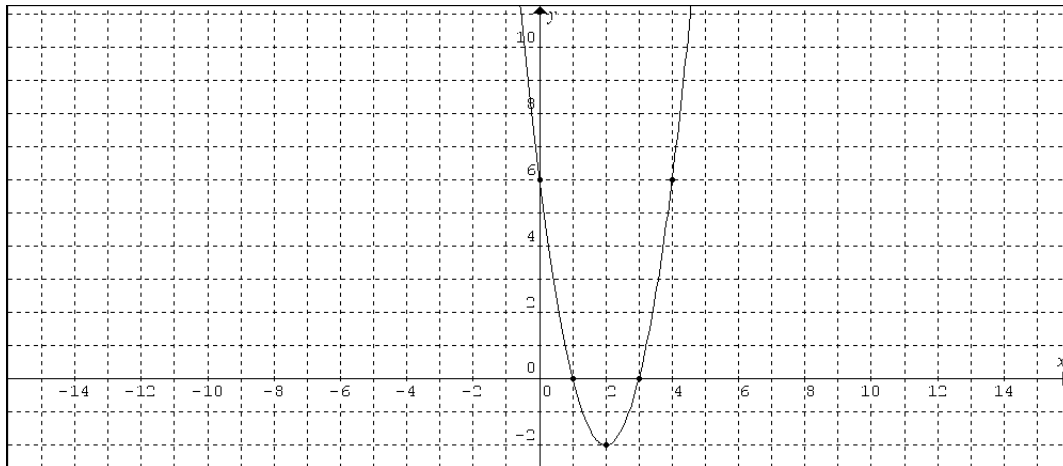


Quiz #2A – Properties of Quadratics

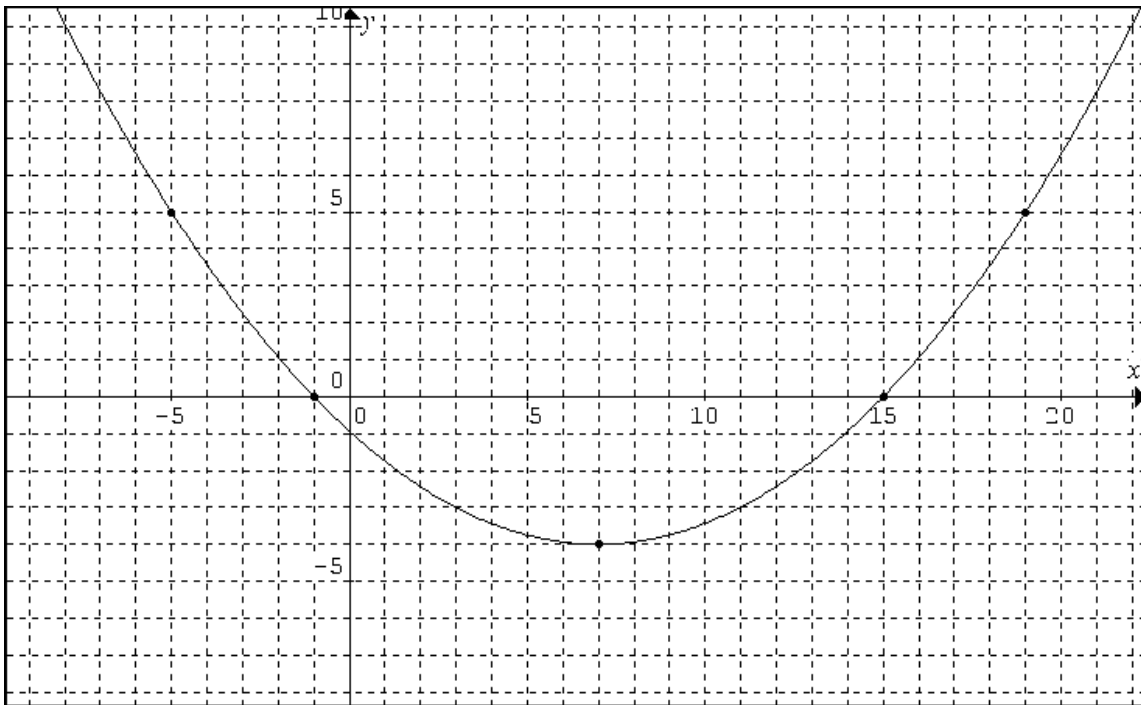
[12 marks]

1. The following graph is of the equation $y = 2x^2 - 8x + 6$.



- a) State the **y-intercept**. [1 mark]
- b) State the **zeroes**. [2 marks]
- c) Draw the **axis of symmetry** on the graph. [1 mark]
- d) State the equation of the **axis of symmetry**. [1 mark]
- e) State the **vertex** of the relationship. [1 mark]

2. Determine the **equation** of the parabola shown in the graph.



a) Determine the equation of the graph in **factored form**. [4 marks]

b) Convert the factored form to **standard form**. [2 marks]